

western + contemporary unite

homestead

jackson hole + surrounding areas

architecture + interior design + real estate + art

Where the Wild Things Are

Art collectors fill their home with wildlife

Sizzling West

Branding's Hot History

7 Showcase homes 7 Personal styles

A Very Attractive Bottom Line

The economic benefits of building green

USA \$5.95 2007/2008



Casual Elegance Meets Timeless Design

Building site and client lifestyle intersect
in this elegant, yet practical home

+ Story by Valerie Beck

Caramel-colored moss rock dictates the colors of the traditional exterior finishes. Rich red-brown, wood-framed, mullioned windows and areas of cool, spruce green lapboard siding place the home into the environment in a discreet yet genuine way.

STATS

DESIGNER:
HARKER DESIGN

ARCHITECT:
BERLIN ARCHITECTS

SQUARE FOOTAGE: 6,200

BEDROOMS/BATHROOMS:
FIVE BEDROOMS WITH FIVE FULL
BATHS AND TWO HALF BATHS

PHOTOGRAPH BY BOB JOHNSON PHOTOGRAPHY



With its abundant chestnut cabinets, large granite workspaces, and efficient floor plan, the kitchen is the perfect place to host large family-and-friends gatherings and showcase culinary skills.



Dining in the round affords the best arrangement for conversation. This custom-designed table seats six in its usual configuration. With its unique quarter-round leaves in place, the still-round table seats ten in richly textured upholstered side chairs. A massive iron chandelier repeats the table's dimensions. A marble-topped server backs up to an overstuffed sofa in the Great Room, further demarcating open space.

Every house has its basic requirements, but how a home evolves from a client's desire is all about the vision of the team and how they work together. The team for this exclusive home comprised its architect Larry Berlin, designers Pat Harker and Brian Goff, and the homeowners—a most successful collaboration.

The homeowners' emphasis was on the shared living areas of the house. With adult children, their respective spouses, and a growing cadre of grandchildren—as well as an extensive social network—they wanted to comfortably accommodate large gatherings in the Great Room, dining room and kitchen. An adjacent den and large front entry add to the mingle room.

Still, the house needed structure. So, to define the open floor plan, Berlin looked to the roof and ceiling, using vaulted timbers and

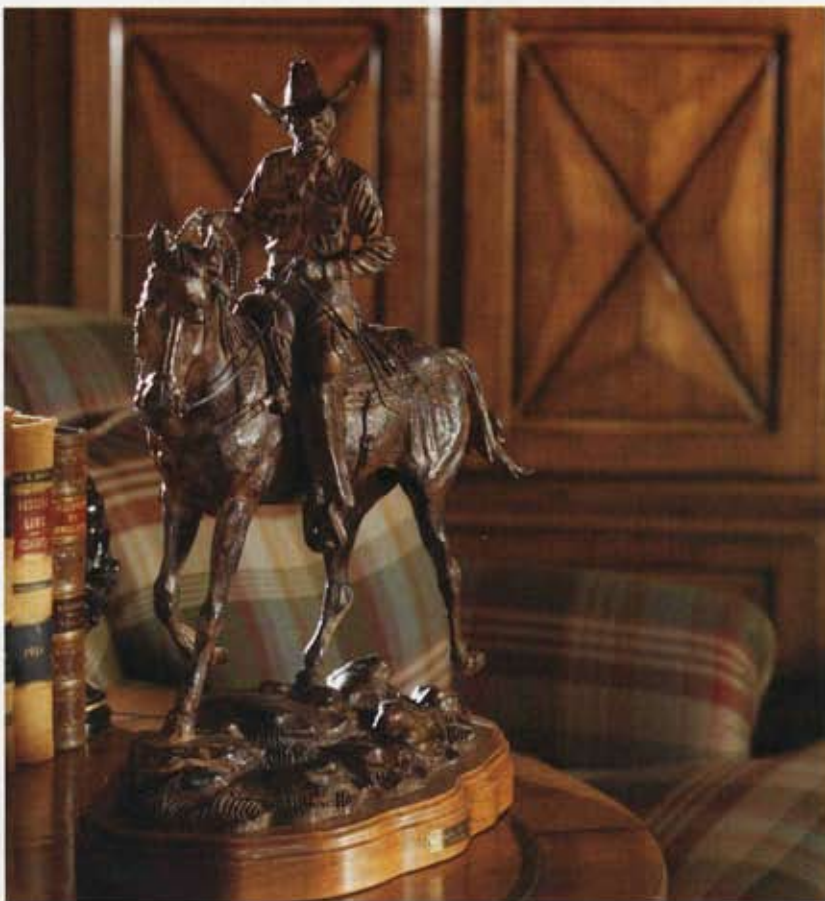
interesting soffits to visually separate areas. And he sited each area of the house to take advantage of different natural views, such as a seasonal stream, mountains and intimate tree groupings, and give each space its own character.

That done, Harker Design selected flooring of stone and reclaimed chestnut to suggest spatial boundaries, refining dimensions with the use of a beautiful collection of area rugs throughout. Then, inspired by the caramel tones of the moss rock fireplace, they gathered a houseful of traditional, mountain rustic and antique furnishings and accessories to create comfortable, character-filled conversation, dining and seating areas.

Casual elegance and timeless design result in a home fit for collecting family and friends into warmth, charm and security.



Rich caramel-colored chenille sofas, warm leather benches, and a variety of complementary upholstered wood chairs and side tables embrace the stunning stone fireplace with its massive hand-carved mantelpiece. Accessories include antique baskets and plush pillows that capture the colors of the rug and nearby dining chairs. Everything in the home is warm and welcoming—a smooth, relaxed flow from area to area.




Above: The homeowners collect artwork primarily depicting animals. Niches throughout the house showcase paintings and sculpture. Here, a custom table lamp sheds light on the subject and unifies a table-top of accessories.

Above left: The handsome hand-carving of an Old World mantelpiece is a perfect example of the team's desire to reflect the natural elements of the site inside and frame them outside.

Left: Discreet use of antiques, paintings, accessories and sculpture provide just enough Western atmosphere to ensure residents and visitors experience a clear sense of place.

Opposite page: Open and adjacent to the dining area and kitchen is the inviting warmth of a cozy den that provides personal space for the homeowners to relax, as well as an additional conversation and seating area when the house is full of guests.

A photograph of a rustic living room. On the right, a large stone fireplace with a wooden mantel contains a fire. On the mantel, there are several lit candles and a large, round, woven basket. In the center, a dark wood coffee table holds a vase of purple flowers and a bowl of pumpkins. To the left, a brown sofa is partially visible, with a dark wood side table in front of it holding a book. A window with white blinds and a wooden frame is on the left, with a floor lamp standing in front of it. A framed picture hangs on the wall above a chair. The floor is covered with a patterned rug.

“Subtlety, atmosphere,
comfort and an effort to site
each area with a unique and
intimate view — whether it’s
of a whole mountain range
or a streamlet with trees —
reflects our **style** and our
client’s wishes.”

— Larry Berlin